

Minnesota  
Fillmore

U.S. Department of Agriculture  
Farm Service Agency  
**Abbreviated 156 Farm Record**

**FARM: 7303**  
Prepared: 1/11/18 4:17 PM  
Crop Year: 2016  
Page: 1 of 3

Report ID: FSA-156EZ

DISCLAIMER: This is data extracted from the web farm database. Because of potential messaging failures in MIDAS, this data is not guaranteed to be an accurate and complete representation of data contained in the MIDAS system, which is the system of record for Farm Records.

<b>Operator Name</b>	<b>Farm Identifier</b>	<b>Recon Number</b>
TRACY J CLEMENT	FM COMB 4573 7219 7292 7302	2006 27045 18

**Farms Associated with Operator:**  
2390, 5402, 5826, 6415, 7218, 8158, 8159, 9053, 9272, 9395

CRP Contract Number(s): None

Farmland	Cropland	DCP Cropland	WBP	WRP/EWP	CRP Cropland	GRP	Farm Status	Number of Tracts
231.49	201.73	201.73	0.0	0.0	0.0	0.0	Active	4
State Conservation	Other Conservation	Effective DCP Cropland	Double Cropped	MPL/FWP	Native Sod			
0.0	0.0	201.73	0.0	0.0	0.0			

ARC/PLC			
ARC-IC NONE	ARC-CO CORN	PLC NONE	PLC-Default NONE

Crop	Base Acreage	CTAP Tran Yield	PLC Yield	CCC-505 CRP Reduction
CORN	191.8		134	0.0
<b>Total Base Acres:</b>	191.8			

*\* KNOWN ON Auction AS tract #3*

Tract Number: 2051      Description: S2NE4 32 BLOOMFIELD  
BIA Range Unit Number:  
HEL Status: NHEL: no agricultural commodity planted on undetermined fields  
Wetland Status: Tract does not contain a wetland  
WL Violations: None

Farmland	Cropland	DCP Cropland	WBP	WRP/EWP	CRP Cropland	GRP
76.01	75.4	75.4	0.0	0.0	0.0	0.0
State Conservation	Other Conservation	Effective DCP Cropland	Double Cropped	MPL/FWP	Native Sod	
0.0	0.0	75.4	0.0	0.0	0.0	

Crop	Base Acreage	CTAP Tran Yield	PLC Yield	CCC-505 CRP Reduction
CORN	75.4		134	0.0
<b>Total Base Acres:</b>	75.4			

Owners: TRACY J CLEMENT REVOC LIVING TRUST  
Other Producers: None

Minnesota

U.S. Department of Agriculture

FARM: 7303

Fillmore

Farm Service Agency

Prepared: 1/11/18 4:17 PM

Report ID: FSA-156EZ

Abbreviated 156 Farm Record

Crop Year: 2016

Page: 2 of 3

DISCLAIMER: This is data extracted from the web farm database. Because of potential messaging failures in MIDAS, this data is not guaranteed to be an accurate and complete representation of data contained in the MIDAS system, which is the system of record for Farm Records.

Tract Number: 28030 Description: NE4NE4 32 BLOOMFIELD

KNOWN ON THE AUCTION  
AS TRACT # 3

BIA Range Unit Number:

HEL Status: NHEL: no agricultural commodity planted on undetermined fields

Wetland Status: Tract does not contain a wetland

WL Violations: None

Farmland	Cropland	DCP Cropland	WBP	WRP/EWP	CRP Cropland	GRP
37.19	37.19	37.19	0.0	0.0	0.0	0.0
State Conservation	Other Conservation	Effective DCP Cropland	Double Cropped	MPL/FWP	Native Sod	
0.0	0.0	37.19	0.0	0.0	0.0	

Crop	Base Acreage	CTAP Tran Yield	PLC Yield	CCC-505 CRP Reduction
CORN	37.19		134	0.0
<b>Total Base Acres:</b>	37.19			

Owners: TRACY J CLEMENT REVOC LIVING TRUST

Other Producers: None

Minnesota

Fillmore

Report ID: FSA-156EZ

U.S. Department of Agriculture

Farm Service Agency

Abbreviated 156 Farm Record

FARM: 7303

Prepared: 1/11/18 4:17 PM

Crop Year: 2016

Page: 3 of 3

DISCLAIMER: This is data extracted from the web farm database. Because of potential messaging failures in MIDAS, this data is not guaranteed to be an accurate and complete representation of data contained in the MIDAS system, which is the system of record for Farm Records.

Tract Number: 28696 Description: S2NW4 32 BLOOMFIELD

✦ KNOWN on the Auction  
As tract # 4

BIA Range Unit Number:

HEL Status: NHEL: no agricultural commodity planted on undetermined fields

Wetland Status: Tract does not contain a wetland

WL Violations: None

Farmland	Cropland	DCP Cropland	WBP	WRP/EWP	CRP Cropland	GRP
79.2	79.2	79.2	0.0	0.0	0.0	0.0
State Conservation	Other Conservation	Effective DCP Cropland	Double Cropped	MPL/FWP	Native Sod	
0.0	0.0	79.2	0.0	0.0	0.0	

Crop	Base Acreage	CTAP Tran Yield	PLC Yield	CCC-505 CRP Reduction
CORN	79.2		134	0.0
<b>Total Base Acres:</b>	79.2			

Owners: TRACY J CLEMENT REVOC LIVING TRUST

Other Producers: DEREK JOSEPH CLEMENT





*Deborah Chernick*

*\* KNOWN ON THE AUCTION AS TRACT # 4*

Farm 7303

Tract 28696



2016 Program Year

Map Created April 30, 2016



Unless otherwise noted: crops are non-irrigated

Corn = yellow for grain

Soybeans = common soybeans for grain

Wheat = HRS for grain or HRW for grain

Oats and Barley = Spring for grain

Rye = for grain

Peas = process

Alfalfa, Mixed Forage AGM, GMA, IGS = for forage

Beans = Dry Edible

MAG = for GZ

Canola = Spring for seed

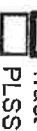
Sunflower = oil or non-oil for grain

Roads

Common Land Unit

Cropland

Tract Boundary



PLSS

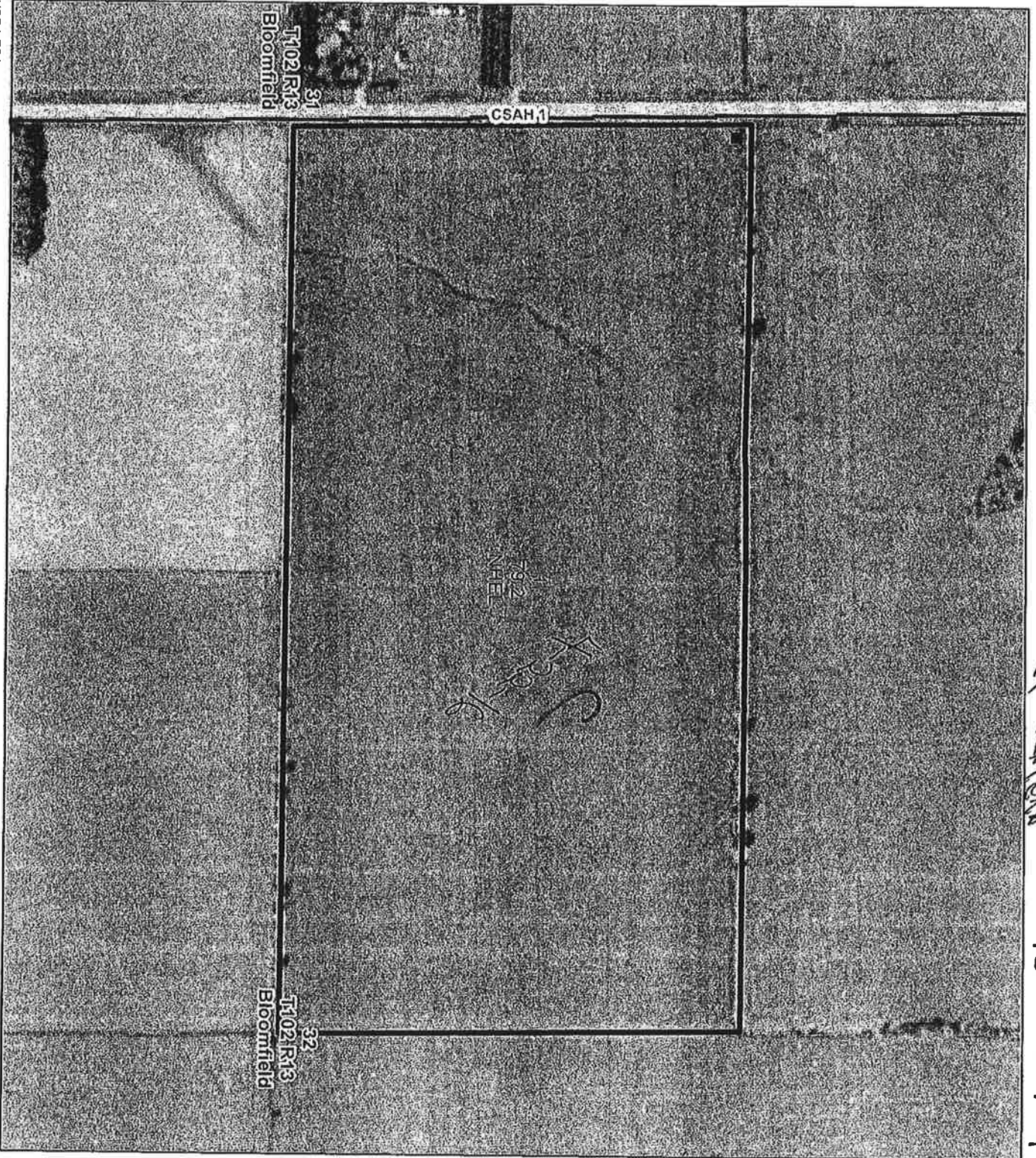
Wetland Determination Identifiers

● Restricted Use

▽ Limited Restrictions

■ Exempt from Conservation Compliance Provisions

Tract Cropland Total: 79.20 acres



USDA FSA maps are for FSA Program administration only. This map does not represent a legal survey or reflect actual ownership; rather, it depicts the information provided directly from the producer and/or the 2015 NAI imagery. The producer accepts the data as is and assumes all risks associated with its use. The USDA Farm Service Agency assumes no responsibility for actual or consequential damage incurred as a result of any user's reliance on this data outside FSA Programs. Wetland identifiers do not represent the size, shape, or specific determination of the area. Refer to your original determination (CPA-026 and attached maps) for exact boundaries and determinations or contact NRCS.

KNOWN ON the Auction AS tract # 5

# REPORT OF COMMODITIES FARM SUMMARY

PROGRAM YEAR: 2016

DATE: \_\_\_\_\_

County, Minnesota

100% Tracy

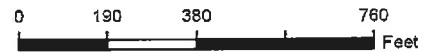
## Farm 7303

## Tract 2051



### 2016 Program Year

Map Created April 30, 2016



- Unless otherwise noted: crops are non-irrigated
- Corn = yellow for grain
- Soybeans = common soybeans for grain
- Wheat = HRS for grain or HRW for grain
- Oats and Barley = Spring for grain
- Rye = for grain
- Peas = process
- Alfalfa, Mixed Forage AGM, GMA, IGS = for forage
- Beans = Dry Edible
- NAG = for GZ
- Canola = Spring for seed
- Sunflower = oil or non-oil for grain

Roads

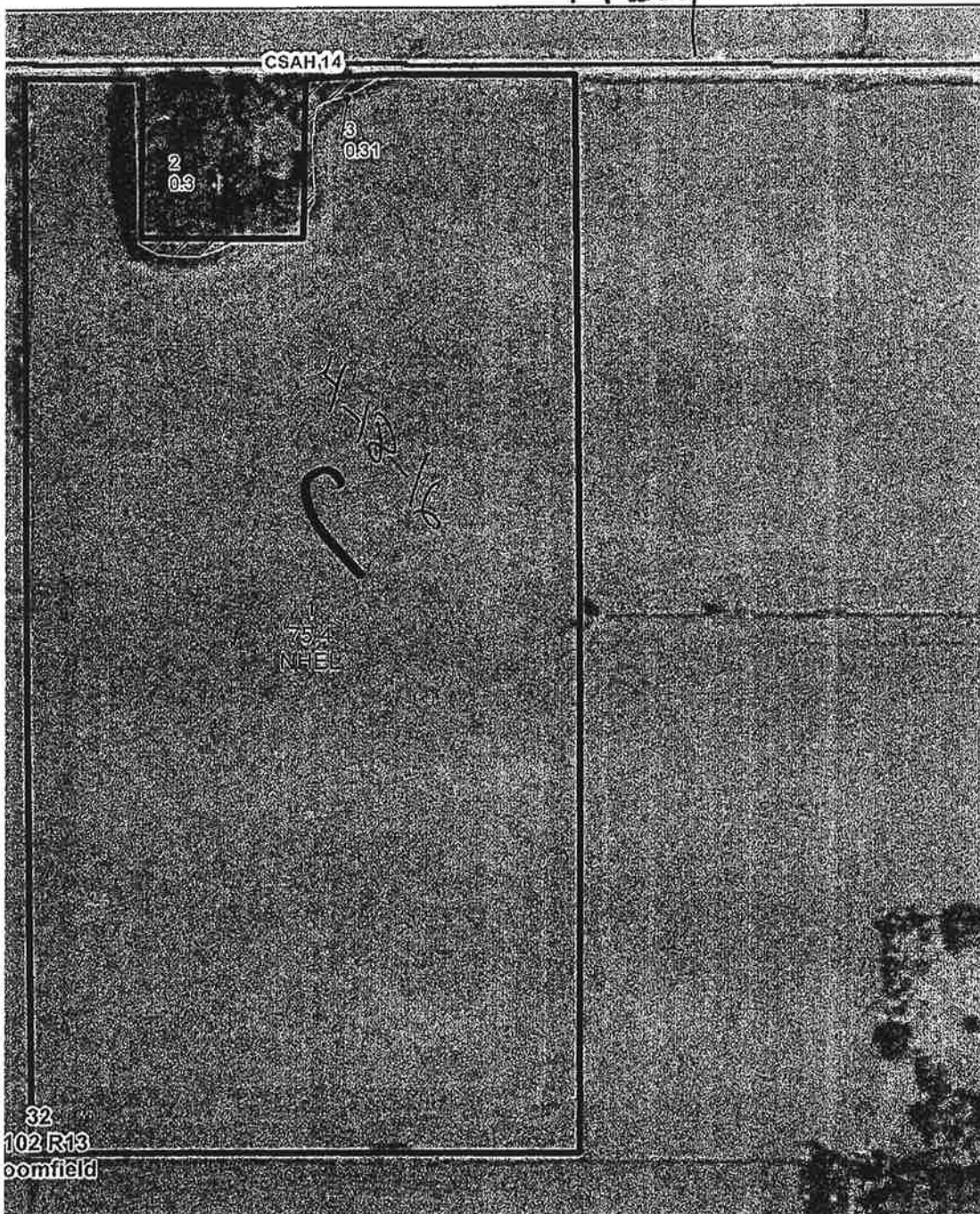
### Common Land Unit

- Non-Cropland
- Cropland
- Tract Boundary
- PLSS

### Wetland Determination Identifiers

- Restricted Use
- Limited Restrictions
- Exempt from Conservation Compliance Provisions

Tract Cropland Total: 75.40 acres



only. This map does not represent a legal survey or reflect actual ownership; rather it depicts the information provided directly from the producer and/or the 2015 NAIP imagery. The producer is responsible for its use. The USDA Farm Service Agency assumes no responsibility for actual or consequential damage incurred as a result of any user's reliance on this data outside FSA Programs. For a specific determination of the area, refer to your original determination (CPA-026 and attached maps) for exact boundaries and determinations or contact NRCS.